

Objective

Q.1: Encircle the correct option of each of the multiple choice question. (1×10=10)

i) which of the following is omnivores

a. Fox

b. Tiger

c. Bear

ii) A butterfly sucks liquid using its



a. Tongue

b. Proboscis

c. Molar

iii) Decay of a tooth is called

a. dentist

b. cavities

c. Painful

iii) When something dissolves or mixes with a liquid we, say it is



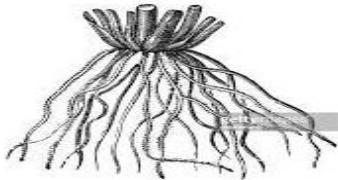
a. Freeze

b. Gase

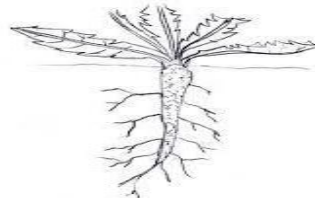
c. Soluble

iv) Which is the Fibrous root

a.



b.



c.



v) The first recorded unit to measure length was

a. Hand span

b. Stride



c. cubit

vi) The standard unit of time is



a. Kilogram

b. Minutes

c. Length

vii)



give out light are

a. Sound

b. Luminous

c. Vibration

vii) Force can do

a. Noise

b. move an object

c. Nothing

viii) Leaves have tiny pores called

a. Respiration

b. Stomata

c. Leaf blade

ix) we get fats from

a. Milk Product

b. Cereals

c. vegetables

x) Thermometer used to measure



a. Temperature

b. Time

c. metre

Q.2: Fill in the blanks (2×5=10)

a) Plants that need support to climb are known as _____

b) Smaller weight is measured in _____

c) Sound is produced by _____

d) _____ is a person who is an expert in diet and nutrition

e) Animals like _____ and _____ laps liquid.

f) _____ absorb water and nutrient from the soil.

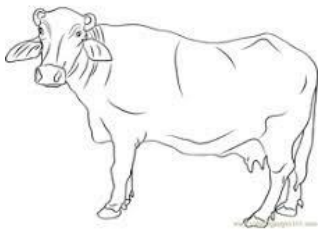
g) Salt is _____ in water.

h) _____ is a complete food.

i) Flower turn into _____

j) Light travel in a _____ line.

Q.3: Identify the picture and write feeding habits of animals (5)

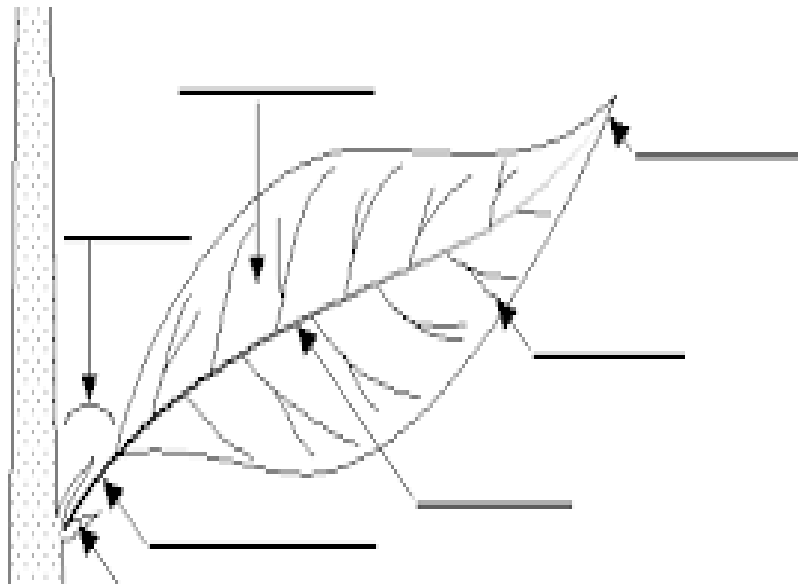




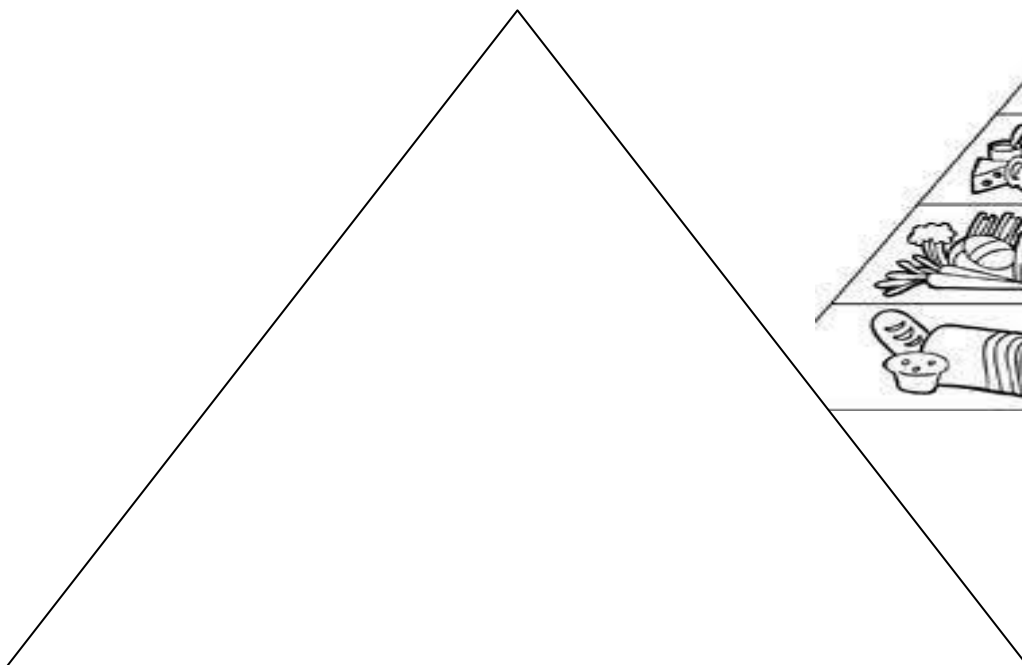


Four horizontal lines for writing, enclosed in a rectangular box.

Q.4: Label the structure of leaf (5)



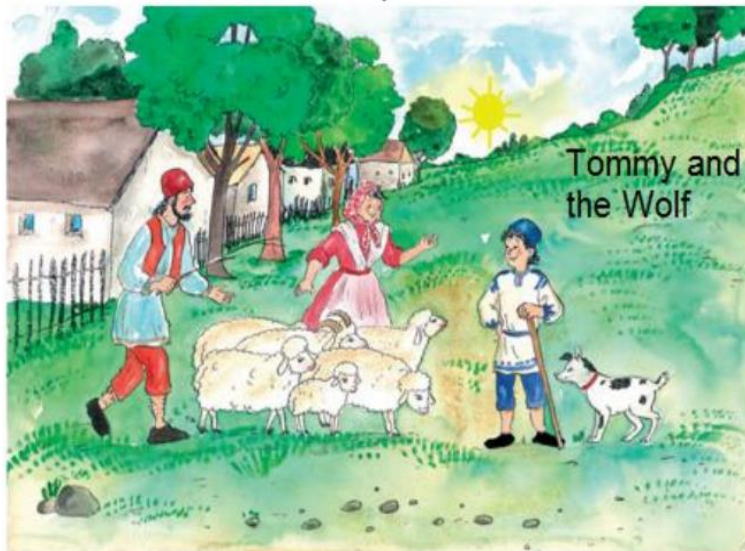
Q.5: Make a food pyramid for a balanced diet (5)



Q.6: Define with example (2×5=10)

Liquid	<hr/> <hr/>
Photosynthesis	<hr/> <hr/>
Capacity	<hr/> <hr/>
Noise	<hr/> <hr/>
Shadow	<hr/> <hr/>

Q.7: Look the picture carefully and choose the correct answer (5)



Tommy is a boy who lives with his parents in a village. His parents have a farm. During summer Tommy helps the villagers to look after their animals. He usually takes the sheep up to the hills.

1. What is the boy's name?

- A) Tommy B) Jack C) Toby D) Dennis E) Paul

2. Tommy's parents are

- A) actors B) vets C) pilots D) teachers E) farmers

3. When does Tommy help the villagers?

- A) In September, October and November. B) In December, January and February.
C) In June, July and August. D) In August, September and October.
E) In February, March and April.



One day Tommy feels very bored. To have some fun, he runs up the rocks, climbs the trees, and chases the sheep. Then he has a great idea. He climbs one of the tallest trees and shouts: "Wolf! Wolf! Woolf! Woohoolf!"

5. When Tommy is bored, he

- A) takes a nap B) runs after the sheep C) goes home
D) reads a book E) sings folk songs

6. Which of these animals **cannot** live on a farm?

- A) A goat B) A sheep C) A cow D) A wolf E) A hourse

7. Why does Tommy shout "Wolf!"? Because

- A) he wants to have fun B) a wolf is chasing the sheep C) he sees a wolf in the forest
D) the dog's name is Wolf E) his name is Wolf

8. Look at the picture! What are the sheep eating?

- A) bones B) milk C) meat D) grass E) sheep

