


Objective

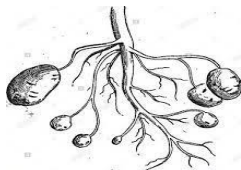
Q.1: Fill in the blanks (1×5=5)

- i) Seeds of some plants have one seed leaf are called _____
- ii) Crops grown in winter season are _____ crops
- iii) _____ are called body-building food
- iv) _____ attract iron objects
- v) Fish breathe through _____

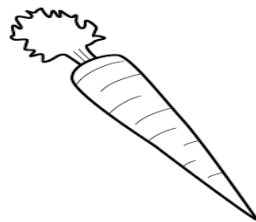
Q.2: Encircle the correct option (1×10=10)

- i) Herbivores have strong and broad
- a) Molar b) Incisors c) Canines
- ii) Adult human has
- a) 330 bones b) 206 bones c) 406 bones
- iii) Reflex action is controlled by
- a) Brain b) Spinal cord c) Nerve
- iv)  Rotate around
- a) Axle b) Fulcrum c) Circular
- v) Underground stems are

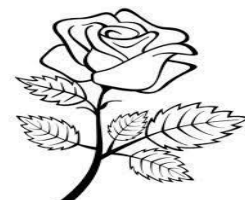
a)



b)



c)



vi) Disease that spread through water are

- a) Common cold b) Cough c) Typhoid

vii) Oil are

- a) Miscible liquid b) Immiscible liquid c) Soluble liquid

viii) Insect breath through small holes called



- a) Gills b) Spiracles c) Lungs

ix) Front legs are also called

- a) Hind limbs b) Forelimbs c) Bent

x) The immovable joints are

- a) Skull b) Spine c) Pivot

Q.3: Correct these statement (1×5=5)

i) Rabi crops grown in summer season.

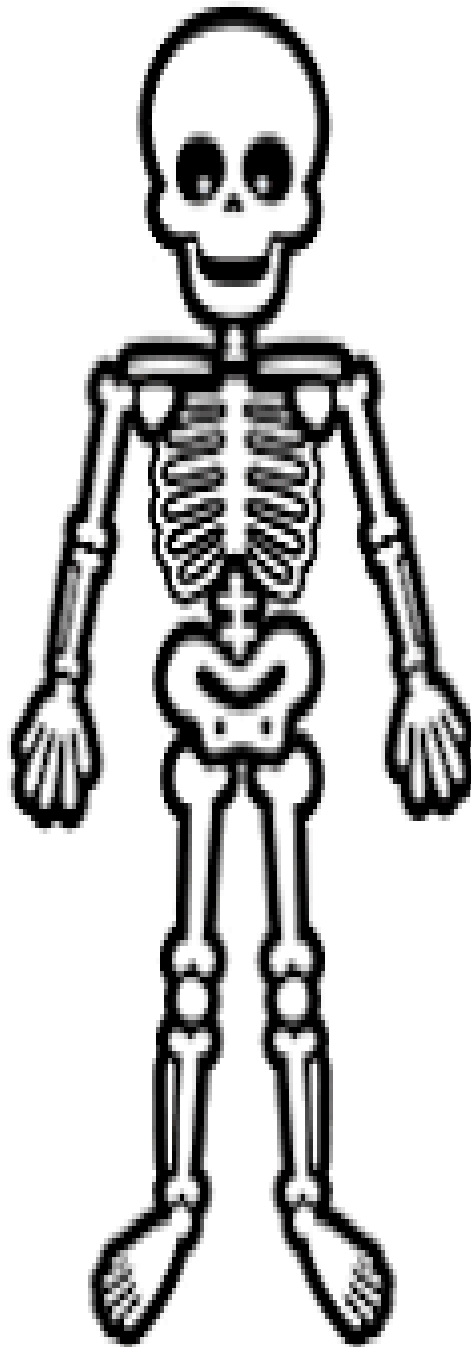
ii) Rickets caused by deficiency of Vitamin C.

iii) Physics change in which new product is formed.

iv) Proboscis is the small tube like tongue of some insect.

v) The skull is made up of 35 bones.

Q.4: Label the structure of Pelvic girdle and pectoral girdle (5)



Q.5: Answer these question in short (2×5=10)

a) State the law of conservation of energy.

b) How does the tongue help you to taste the food?

c) What is the difference between voluntary and involuntary muscles?

d) How are fishes able to breathe under water?

e) How does milk food group help us?

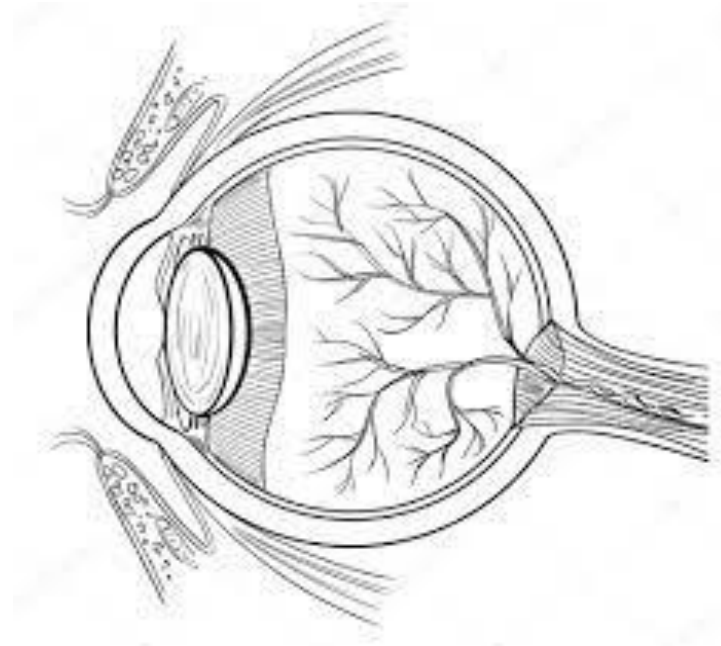
Q.6: Identify the type of simple machine in given picture and write a short note on machine (2.5×5)



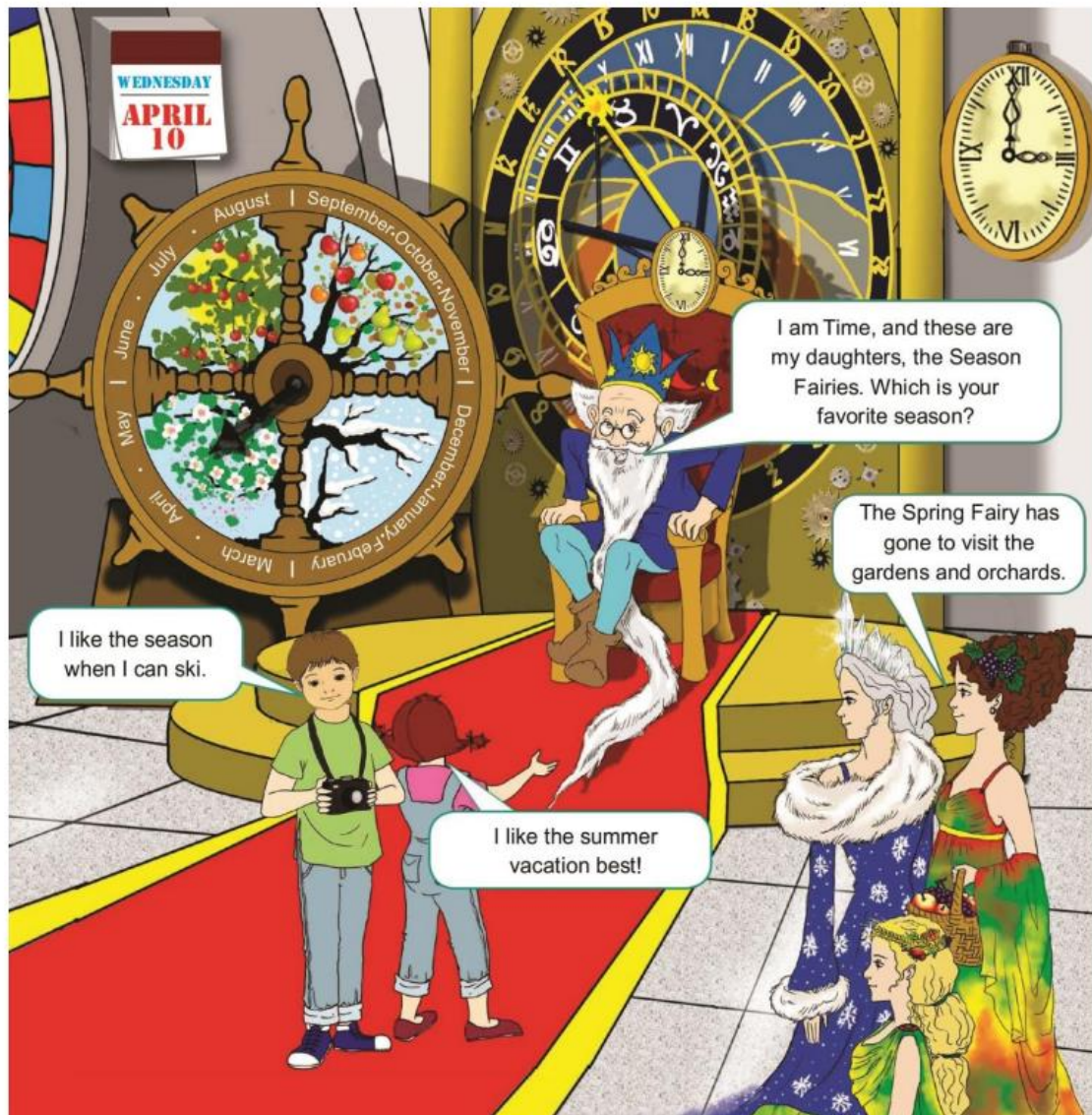
<hr/> <hr/> <hr/> <hr/> <hr/>



Q.7: Label the structure of human eye (5)



Q.8: Look the picture carefully and choose the correct answer.



1. During which month of the year did the children visit the Hall of Time?

A) the first
D) the fourth

B) the second
E) the fifth

C) the third

2. In the Time Hall, the children meet Fairies representing

- A) fruits B) Time and Season C) forest
D) sea E) mountains

3. Near the throne of Time there is

- A) a car wheel B) a Fairy wheel C) a bicycle wheel
D) the Season Wheel E) the story wheel

4. What does the Autumn Fairy have in her hair?

- A) strawberries B) flowers C) grapes
D) stars E) apples

5. What season is in the top right corner of the Season Wheel?

- A) spring B) summer C) autumn
D) winter E) April

